

Environnement de vie et comportements nutritionnels

Jean-Michel OPPERT

Service de Nutrition, Hôpital Pitié-Salpêtrière (AP-HP)
Institut de Santé Globale – Alliance Sorbonne université

Equipe de Recherche en Epidémiologie Nutritionnelle EREN
Inserm U 1153/Inrae/Cnam

Convention citoyenne USPN 05.11.2024

Notre espace de vie façonne notre alimentation, notre activité physique et notre santé

Goenka S & Andersen LB. *Lancet* 2016



Contexte

Approche populationnelle

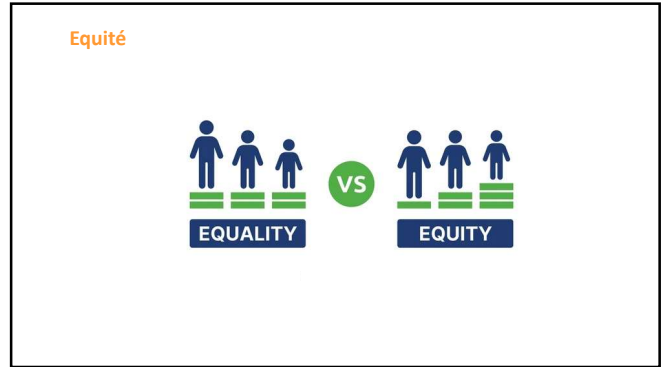
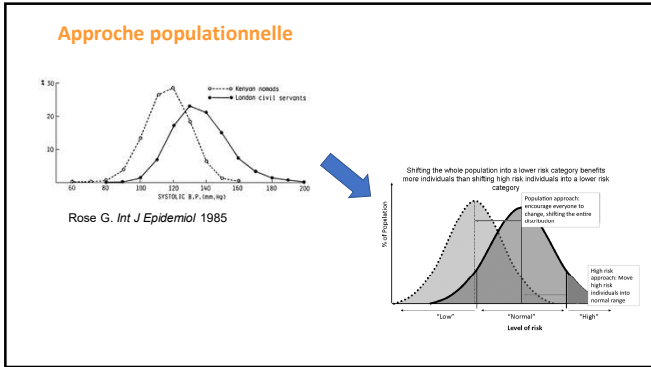
Equité



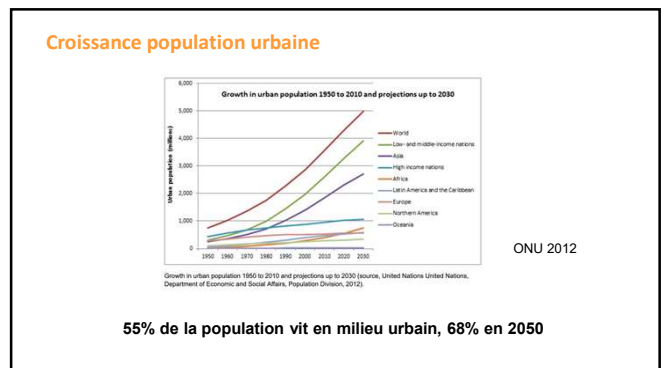
Contexte




The Washington Post 08.04.2007
Democracy Dies in Darkness




Caractéristiques de l'environnement



Formes urbaines



<https://latraversegeographie.com/>



©Orangeo architectur - Los Angeles - Jurgens + Ingeman

Los Angeles, USA

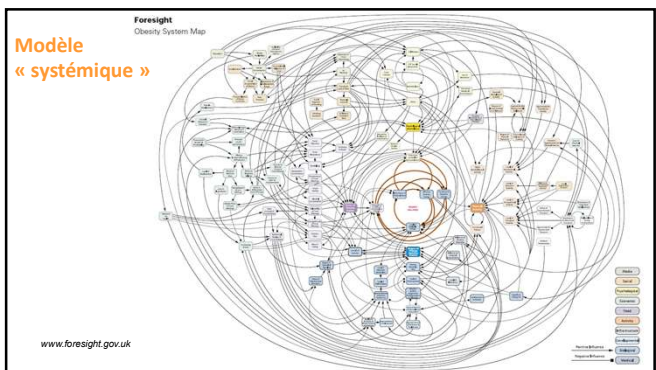
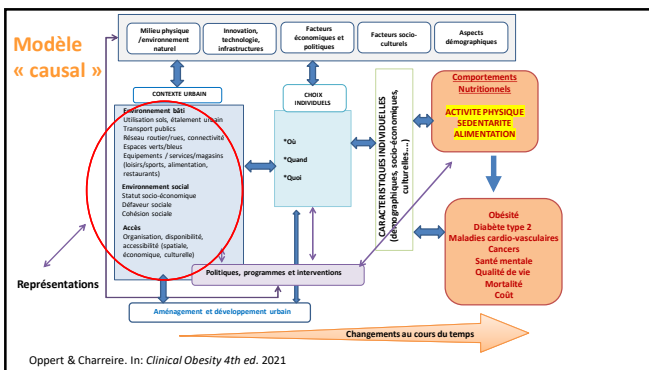
Fair Lawn, USA

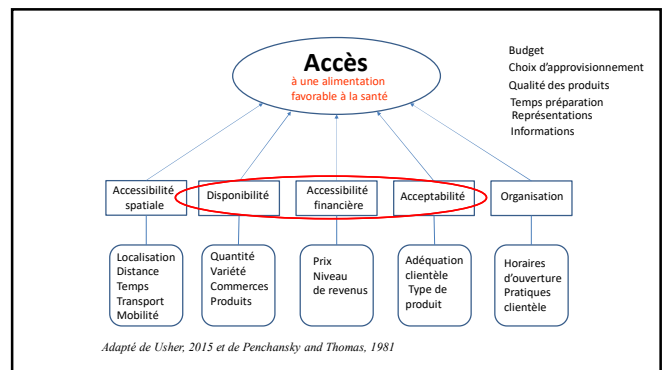
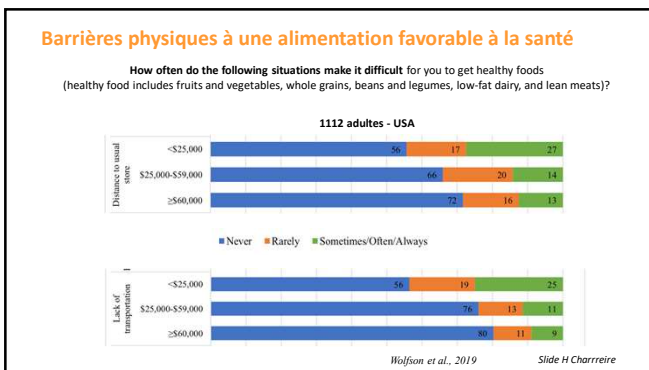
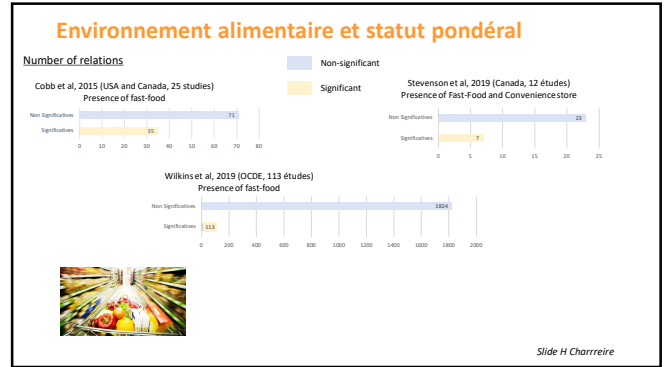
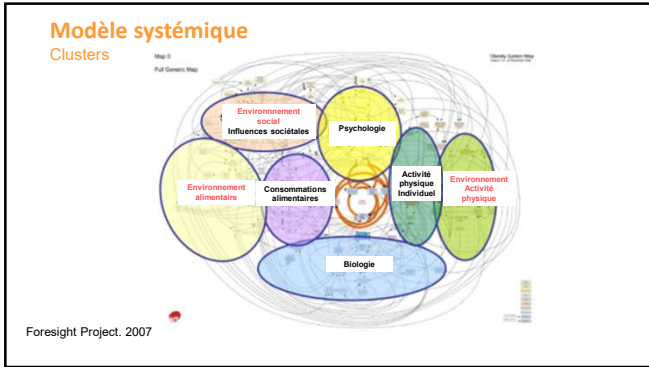
Delft, Pays-Bas

Venise, Italie

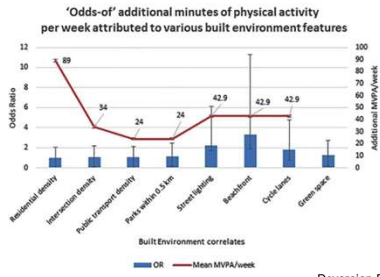
Les formes de trame urbaine et leur impact sur la place dédiée aux piétons. Jan Gehl, 2012; Author provided (this reuse) Slide H Charreire

- ### Environnement(s)
- Environnement construit - bâti / environnement physique
 - Immeubles, infrastructure transport, espaces verts et bleus, équipement de loisirs/sport, commerces (alimentaires)...
 - Environnement naturel
 - Environnement social / culturel
 - Environnement politique / réglementaire / législatif
 - Environnement commercial
 - Environnement digital
 - ...



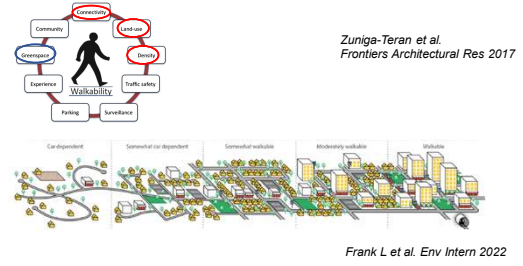


Caractéristiques environnement construit et activité physique

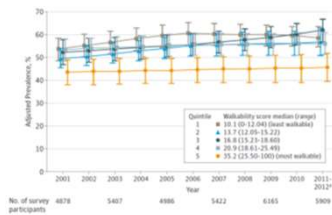


Devarajan R et al. *Obes Rev* 2020

Potentiel piétonnier – « Marchabilité »



Marchabilité quartiers – Prévalence (%) surpoids

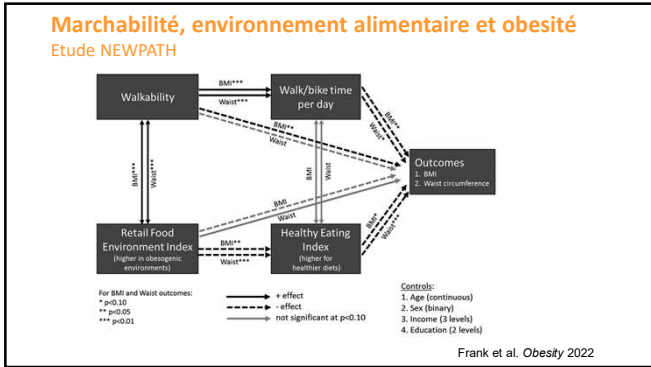


Canada Census, adults 30-64 y, urban, London, Ottawa, Toronto, Hamilton, 2001-12 adj. age, sex, median income, ethnicity

Creatore et al. *JAMA* 2016



Adapté de Usher, 2015 et de Penchansky and Thomas, 1981



Perceptions des ressources disponibles

ELIANE study (2007-11). Data on file

Interventions sur l'environnement

Intervention

Expériences « naturelles »

TBM SYSTEMATIC REVIEWS

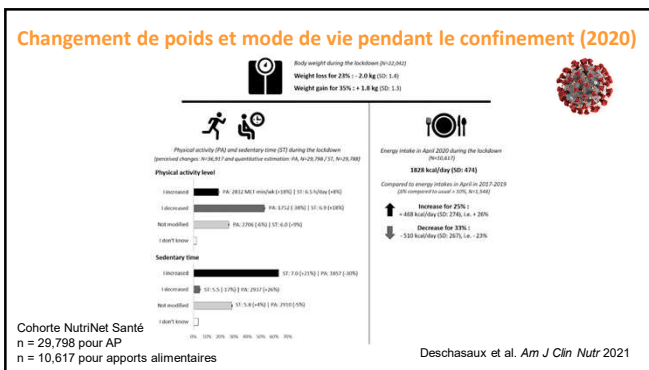
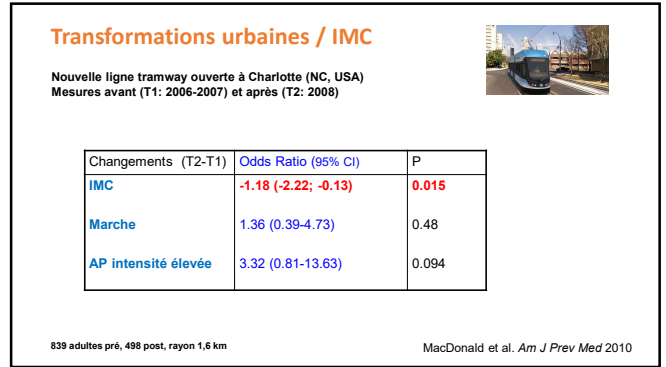
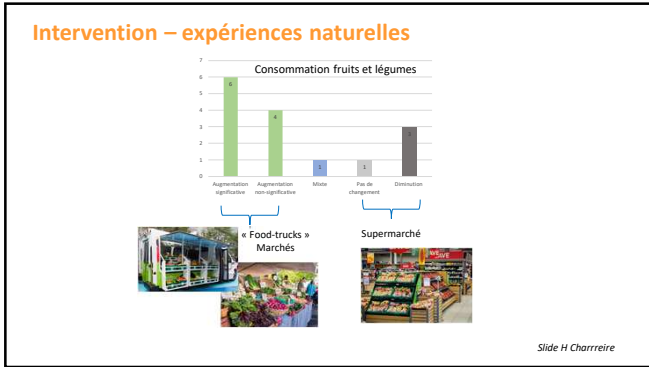
The introduction of new food retail opportunities in lower-income communities and the impact on fruit and vegetable intake: a systematic review

↳ **New food retailer
Lower-income communities
Fruits and vegetables consumption
US context**

Number of studies

Fruits and vegetables consumption

Slide H Charrreire



- ### (Nombreux) co-bénéfices d'une ville plus active
- Diminution émissions CO2
 - Propreté air
 - Allongement durée de vie autonome
 - Société plus productive
 - Amélioration lien social
 - ...
- WHO Europe Obesity Report 2022

Merci !

jean-michel.oppert@sorbonne-universite.fr



Alliance Sorbonne University
Institute of Global Health